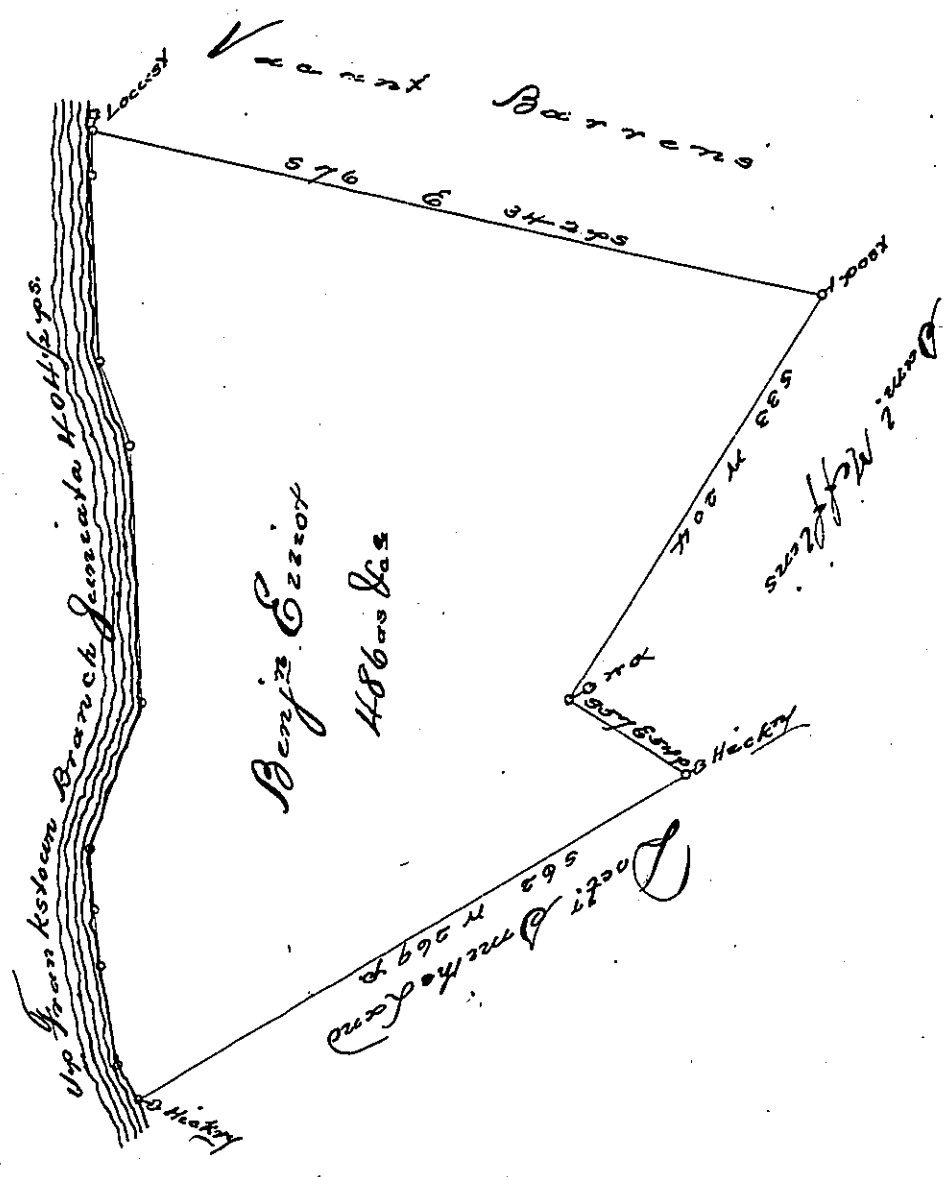


Courses on the River

N. 28. W. 16.
N. 11. W. 40.
N. 5. W. 26.
N. 3. E. 18.
N. 21. E. 66½
N. 2. W. 105.
N. 18. W. 38.
North 80.
N 10. E 15
<u>Total 404½</u>



A Draught of a Tract of Land situate on the North side of the Frankstown Branch of Juniata Containing Four hundred & Eighty six acres with the usual allowance of six p c t for Roads &c. Surveyed the 21st of Feb^ry 1787.

~~Note~~ In pursuance of a warrant dated the twenty second day of March 1785. Note the land upon which this warrant was located, was surveyed upon a prior Warrant & the above survey was vacant poore land

W^o No. 39

John Lukens Esqr.
S. G.

George Woods A.S.

IN TESTIMONY that the above is a copy of the original remaining on file in the Department of Internal Affairs of Pennsylvania, made conformably to an Act of Assembly approved the 16th day of February, 1833, I have hereunto set my Hand and caused the Seal of said Department to be affixed at Harrisburg, this third day of May 1898,

James W. Patton
Secretary of Internal Affairs.